



*ELDW, Oct 02, 2024*

# **Lightning jumps from geostationary observations for nowcasting severe weather - an update**

**Felix Erdmann, Zoe Pelletier, Dieter Poelman**

Koninklijk Meteorologisch Instituut

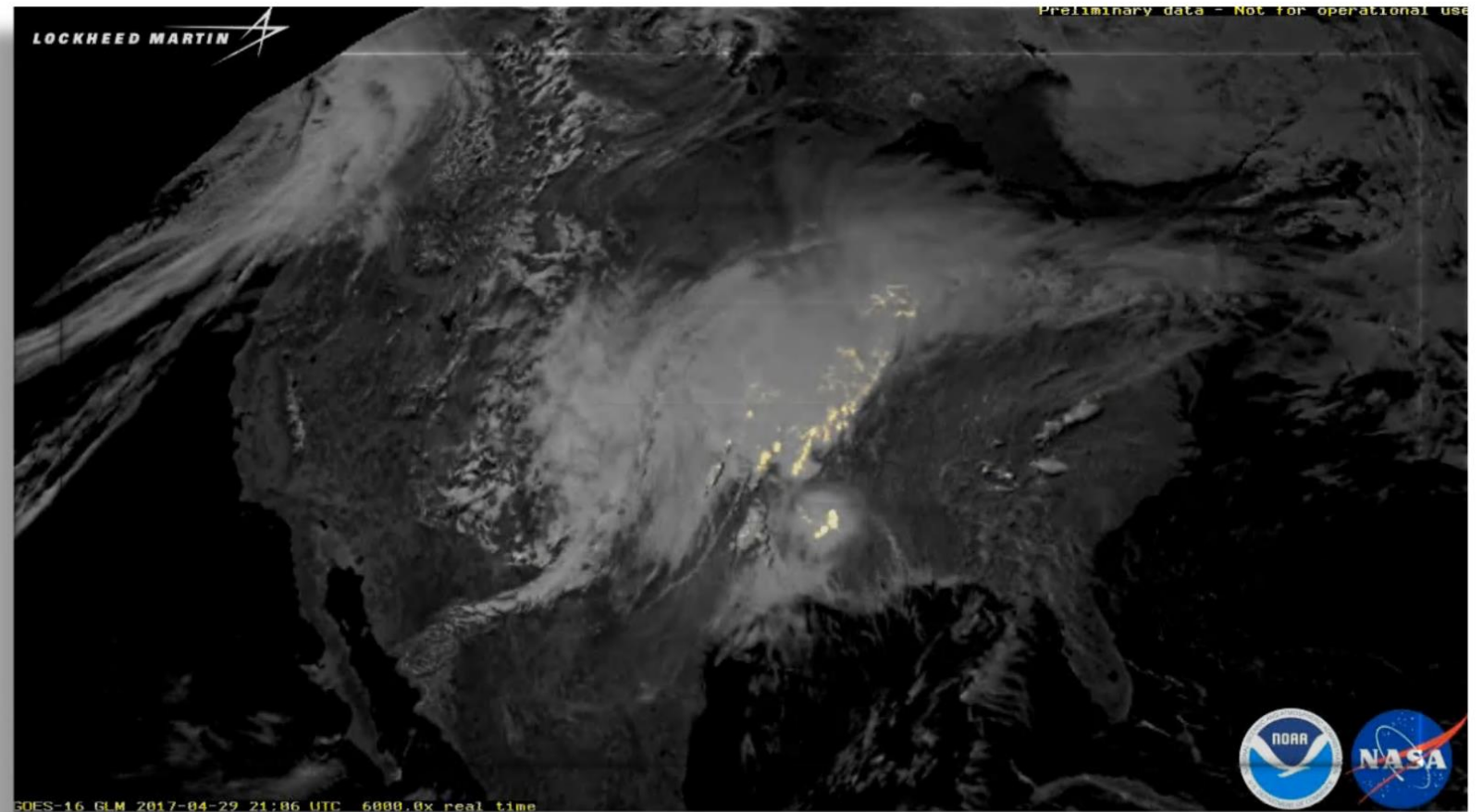
Institut Royal Météorologique

Königliches Meteorologisches Institut

Royal Meteorological Institute

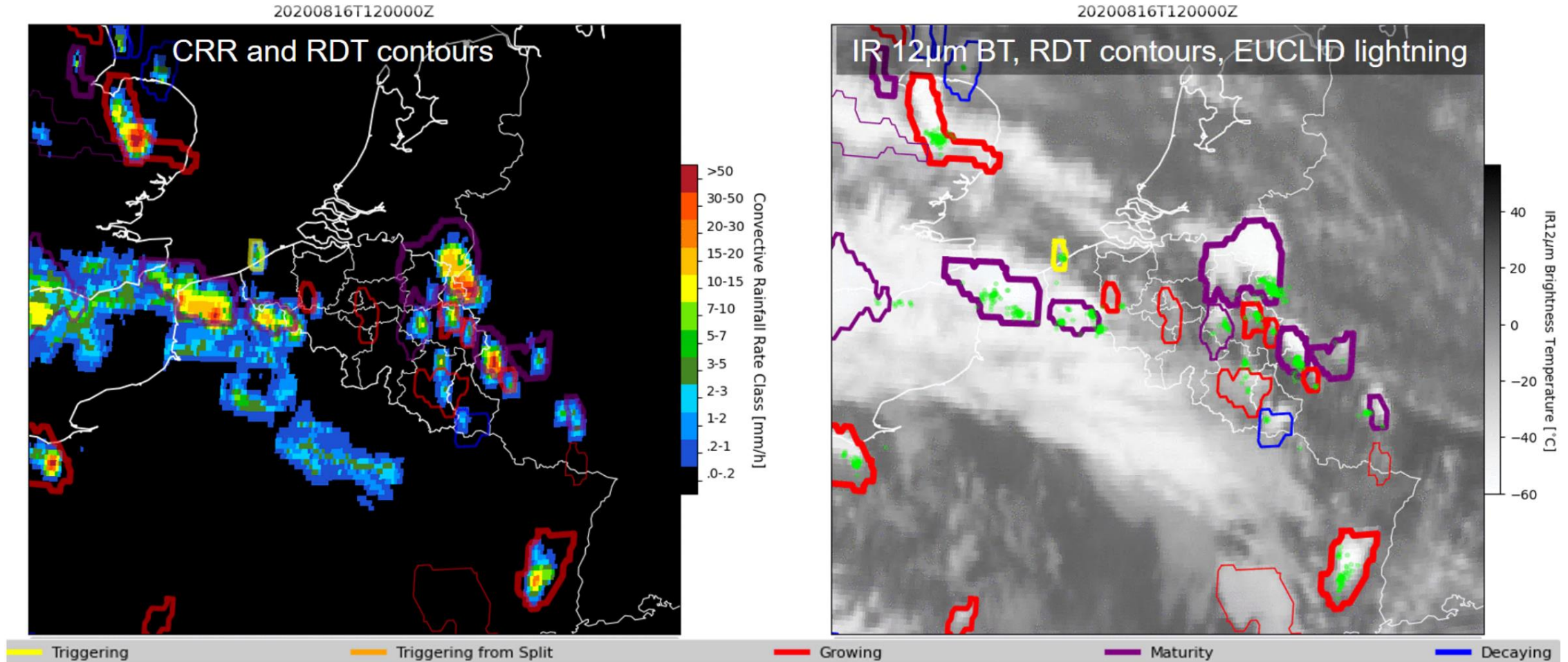
## GOES-16 GLM lightning superimposed on GLM background

- Cloud tops illuminated by lightning
- High frequency cameras onboard satellites:  
**GLM on GOES-R and MTG-LI**
- Day and night
- All types of total lightning observed



# NWCSAF: Cell tracking Belgium

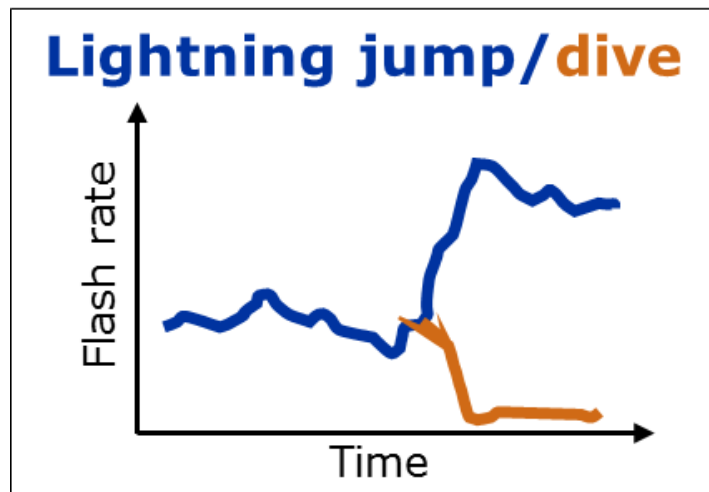
Convective rain rate (CRR) and NWCSAF RDT cell tracking: 16 Aug 2020 – 24 hour loop



# Automated Lightning Jump (LJ) detection

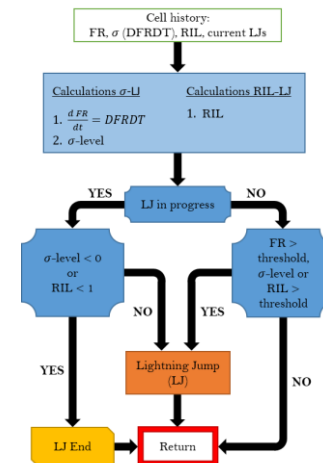
**Lightning Jump (LJ):** An abrupt increase in the total lightning flash rate (flashes per time) observed within a storm cell.

**Lightning Dive (LD):** An abrupt decrease in the total lightning flash rate (flashes per time) observed within a storm cell.



**Time series** of the GLM lightning flash rate for one tracked RDT storm cell

Lightning Jump (LJ) process for each RDT cloud cell



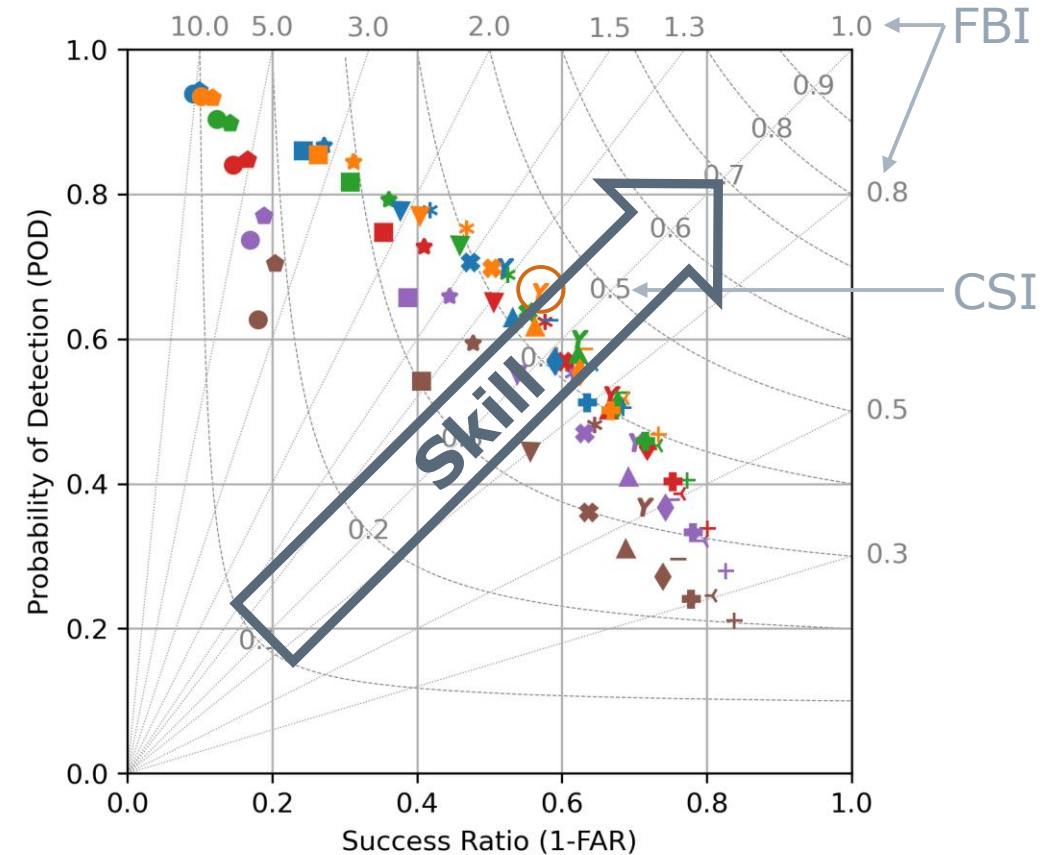
*Erdmann and Poelman, 2023,  
doi: 10.1175/JAMC-D-22-0144.1*

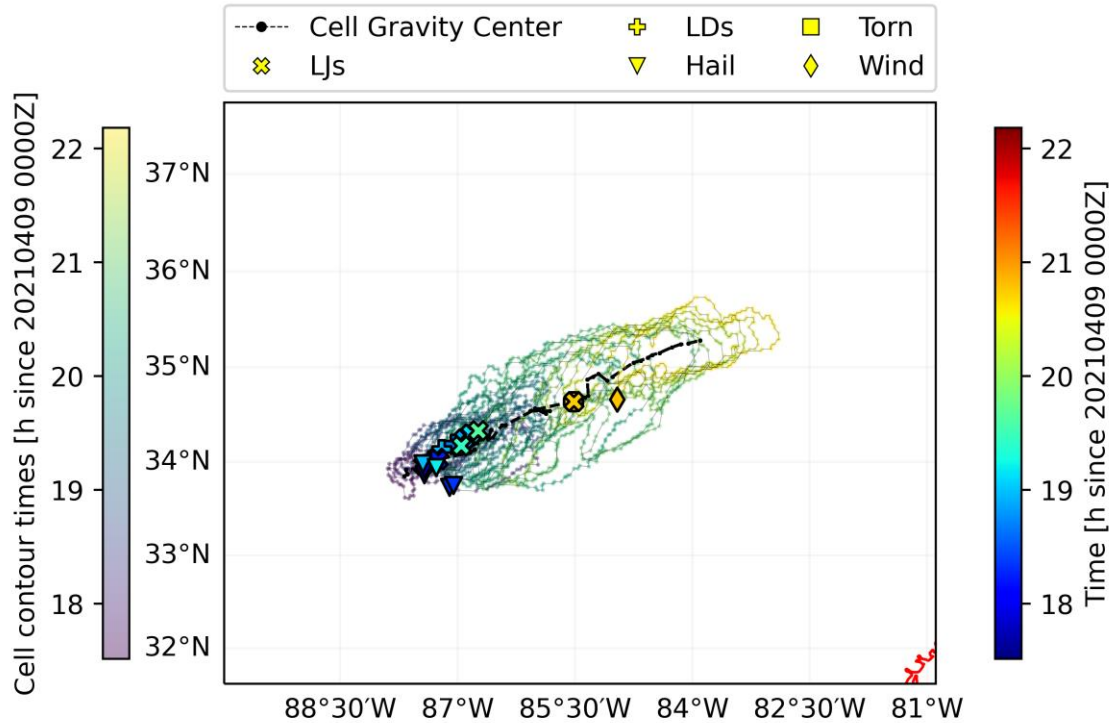
**Automated detection:** Algorithm with a flash rate threshold and a rate-of-change ( $\sigma$ ) threshold

→ Test various thresholds to **optimize the algorithm** performance for GLM data

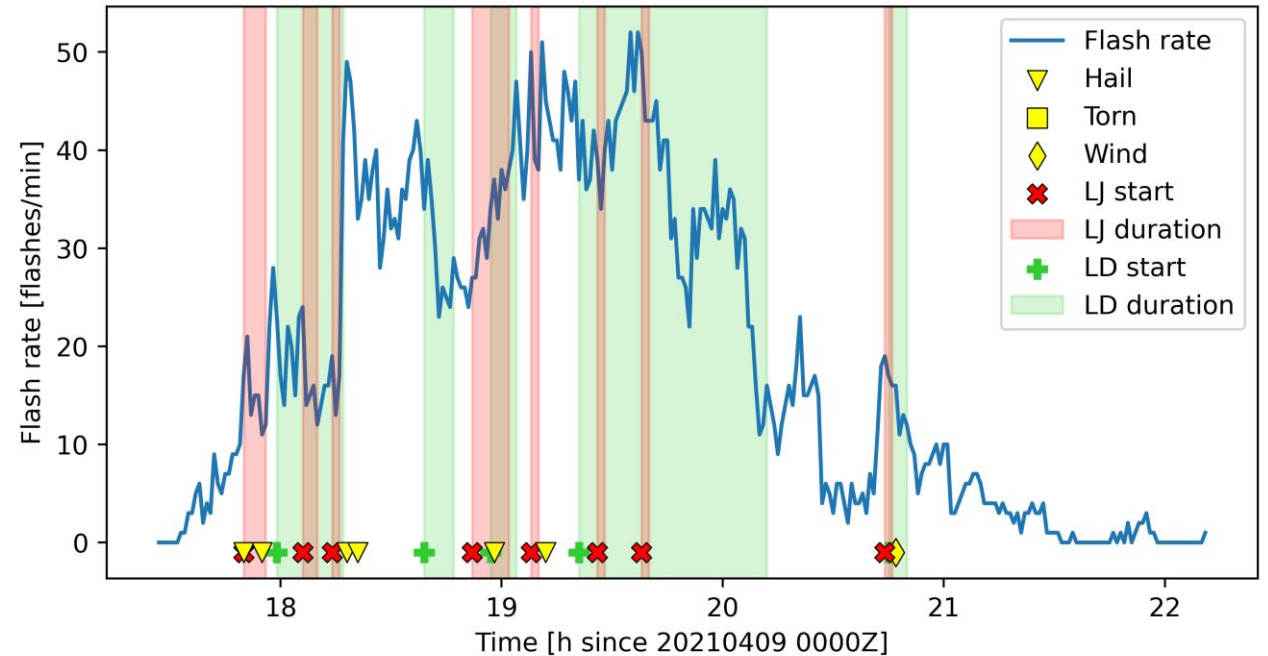
LJs	Severe weather report (Tornado, Hail, Wind)	
	yes	no
yes	A -hit-	B -false alarm-
no	C -miss-	D -correct no-

- Results for various LJ algorithm configurations
- **FR | FRa (markers) and  $\sigma$  (color)** as variable algorithm thresholds





LJ detection: flash rate  $\geq 15$  flashes/min,  $\sigma$ -level  $\geq 1.0$   
 LD detection: flash rate  $\geq 10$  flashes/min,  $\sigma$ -level  $\leq -1.0$



*[figures adapted from the work of Zoe Pelletier]*

- NCEI severe weather report database → correlate GLM LJs and reports
- Hits, misses, false alarms → statistics and skill scores
- New: **NWCSAF software update** from v2018 to v2021\*  
**GOES Conus scan** (5min update) vs. fulldisk scan (10min update)\*

[Credit: Zoe Pelletier]

(WED approach)	Fulldisk 2018	Fulldisk 2021	Conus 2021
<b>POD</b>	0.65	0.83	0.81
<b>FAR</b>	0.18	0.14	0.15
<b>FBI</b>	0.79	0.97	0.94
<b>CSI</b>	0.57	0.73	0.71

*POD : Probability of detection*

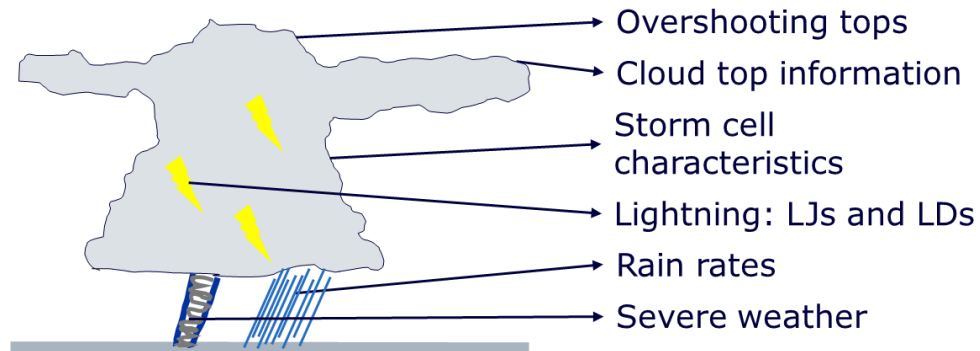
*FAR : False alarm ratio*

*FBI : Frequency bias index*

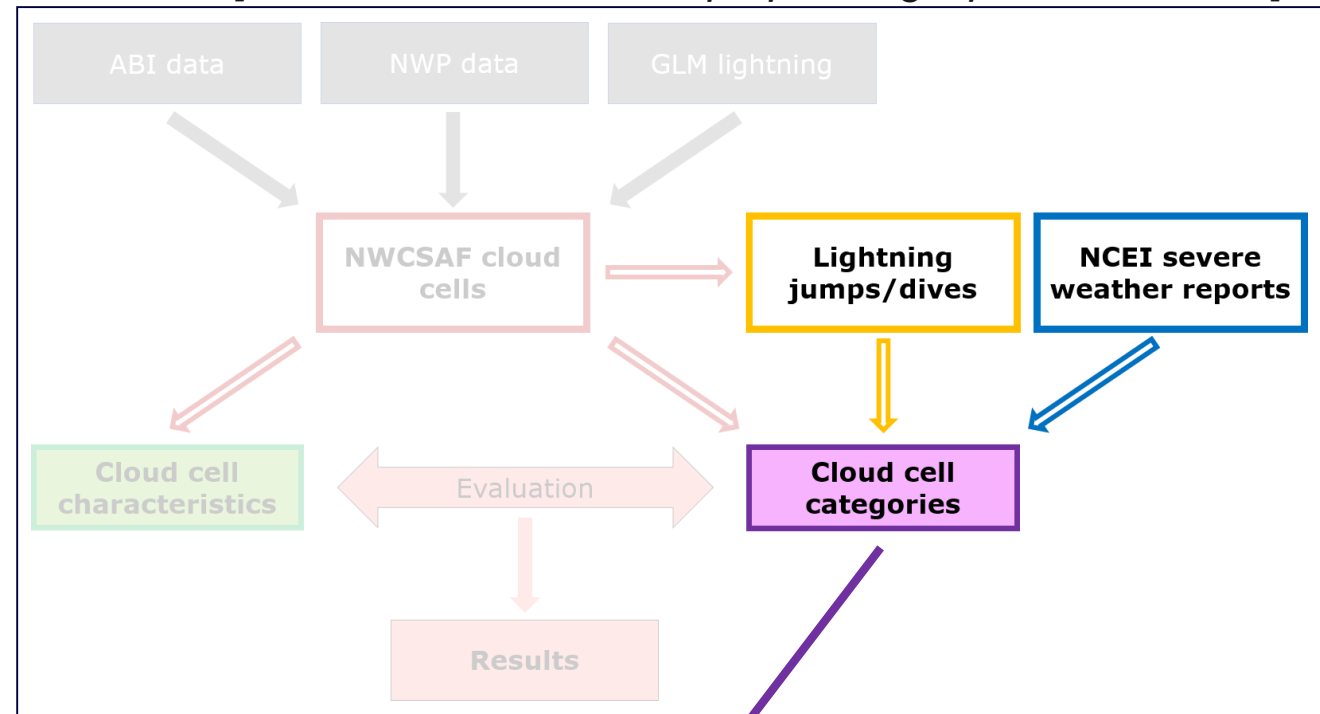
*CSI : Critical success index*

\*results for 3 days in April 2021, more cases soon

- Analysis of almost 25,000 thunderstorms over the US
- NWCSAF cell detection + tracking
- GOES-16 + GLM data
- Storm characteristics



Methods [Erdmann and Poelman, preprint: egusphere-2024-174]

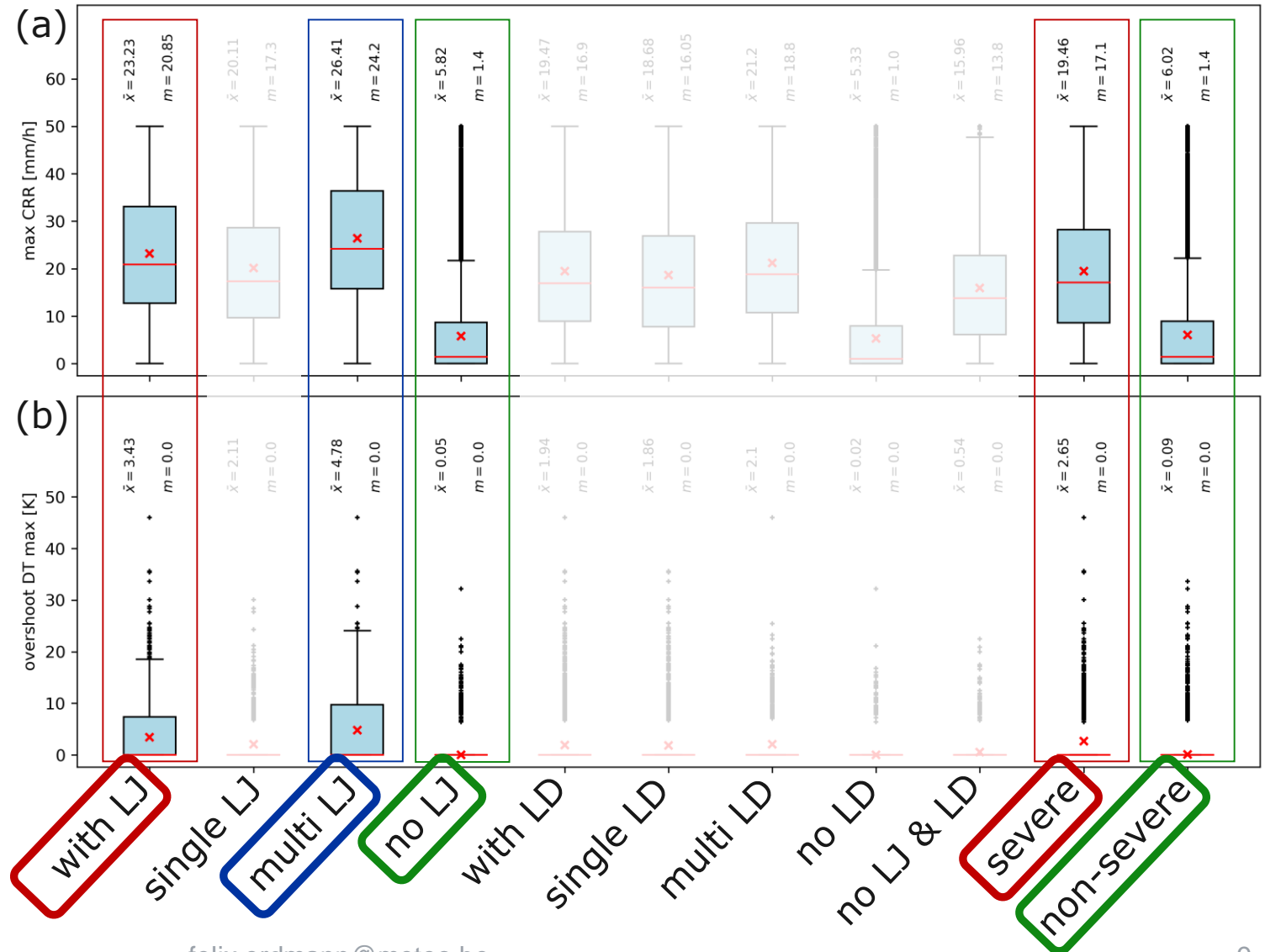


**Storms w/ or w/o LJ, LD, severe weather**



# Thunderstorm categories

- **Categorize** thunderstorms based on LJs, LDs, and severe weather reports (x-axis)
- Compare these storm categories for  
**(a) max rain rates**  
**(b) overshooting tops**



# LJ-storms vs. severe storms

- Characteristics of storms with LJs similar to those of severe thunderstorms
- Storms with multiple LJs favorable of overshooting tops (~strong updrafts) and high convective rain rates

Characteristic (mean)	With LJ	Multiple LJs	Without LJ	Severe	Non-severe
Cloud top Temp. [K]	215	213	235	218	234
Cloud ice fraction	0.94	0.97	0.79	0.93	0.79
OT* count	0.34	0.47	0.0	0.27	0.01
OT* d(Temp.) to anvil [K]	3.4	4.8	0.0	2.6	0.1
Max rain rate [mm/h]	23.2	26.4	5.8	19.5	6.0
WV7.3 Brightness Temp. [K]	212	211	230	216	230
WV6.2-IR11.2 BTD** [K]	-1.2	-0.6	-8.0	-2.3	-8.0

\* overshooting top

\*\* brightness temperature difference

## What do GLM LJs tell us about the storm structure from a satellite point of view?

- Deep convective clouds with cold tops and **high precipitation potential**
- Prone to overshooting tops as a result of **strong convective updrafts**

## Are GLM LJs useful to assess thunderstorm severity?

- Strong updrafts correlate to both GLM LJs and severe weather reports.
- Thermal, cloud top, moisture, and precipitation characteristics of thunderstorms with GLM LJs were remarkably similar to those of severe thunderstorms.
- **Storms with multiple GLM LJs** must be monitored (closely) – strongest updrafts, highest rain rates, and share common characteristics associated with tornado and hail storms.
- Not all severe storms have LJs and not all storms with LJs were reported as severe.

## Do GLM LDs provide additional information about the storms?

- In general, the LJs are more useful as some LDs also occurred in shallow convection.
- LDs may indicate tornadogenesis in some cases but still more research is needed.

# THANK YOU

**The Royal Meteorological  
Institute**

**Het Koninklijk  
Meteorologisch Instituut**

**L'Institut Royal  
Météorologique**

**Das Königliche  
Meteorologische Institut**



The RMI provides reliable public service realized by empowered staff and based on research, innovation and continuity.

Het KMI verleent een betrouwbare dienstverlening aan het publiek en de overheid gebaseerd op onderzoek, innovatie en continuïteit.

L'IRM fournit un service fiable basé sur la recherche, l'innovation et la continuité au public et aux autorités.

Vertrauenswürdige Dienstleistungen für Öffentlichkeit und Behörden begründet auf Forschung, Innovation und Kontinuität.

# A1: Full comparison of storm categories

Characteristic (mean)	withLJ	singleLJ	multiLJ	noLJ	withLD	withNCEI	noNCEI
cell area [km <sup>2</sup> ]	15,780	10,373	21,262	1,911	10,460	12,812	2,066
IR12.3(min_BT) avg [K]	213	215	211	235	217	218	234
min T avg [K]	215	217	213	237	218	219	236
min pressure (top) [hPa]	128.5	136.9	120.1	221.9	138.6	152.7	220.8
vertical grad(T) [K/km]	11.8	13.9	9.6	21.8	14.4	13.2	21.7
cloud ice fraction [-]	0.94	0.92	0.97	0.79	0.92	0.93	0.79
IR3.9(min_BT) avg [K]	234	236	232	252	237	241	252
overshoot count max [-]	0.34	0.21	0.47	0.0	0.20	0.27	0.01
overshoot DT max [K]	3.4	2.1	4.8	0.0	1.9	2.6	0.1
max CRR [mm/h]	23.2	20.1	26.4	5.8	19.5	19.5	6.0
WV6.2(min_BT) avg [K]	211	213	210	225	214	215	225
WV7.3(min_BT) avg [K]	212	214	211	230	215	216	230
WV6.2-WV7.3(p90) max [K]	0.1	-0.2	0.3	-3.3	0.3	-0.5	-3.2
WV6.2-IR11.2(p90) max [K]	-1.2	-1.8	-0.6	-8.0	-2.0	-2.3	-8.0

[Erdmann and Poelman, Table 4, preprint: egusphere-2024-174]